

# CAPABILITY OVERVIEW OF STI LTD



# ABOUT STI



**2 UK**

Sites

**Hook, Hampshire**  
(HQ; PCBA/Test/Product Assembly)

**Poynton, Cheshire**  
(System build)

**£60m**

Annual turnover

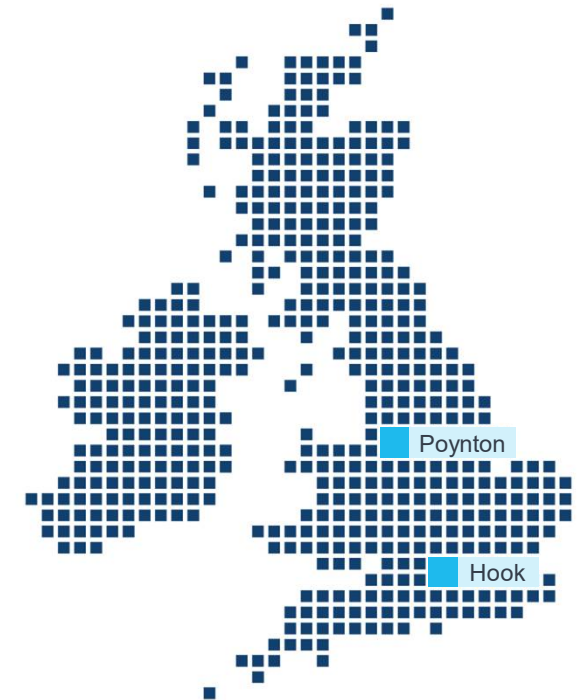
**300+**

Employees

Owned by NOTE

**NOTE**<sup>™</sup>  
YOUR MANUFACTURING PARTNER

Acquired in March 2026



**The UK's largest Electronic Manufacturing Services provider  
for Defence, Aerospace and Security Customers**

**STI**

# PCBA TO FULL SYSTEM ASSEMBLY



260

## Hook, Hampshire

- 2 High-Speed Automated Surface Mount Technology Lines (2.4m components / day)
- High-reliability PCB assembly and box-build
- Full test facilities, including vibration
- Dedicated prototype facility with 2 flexible Mydata lines
- Special processes and full repair / rework facility
- Clean room, NPI, RF screened room

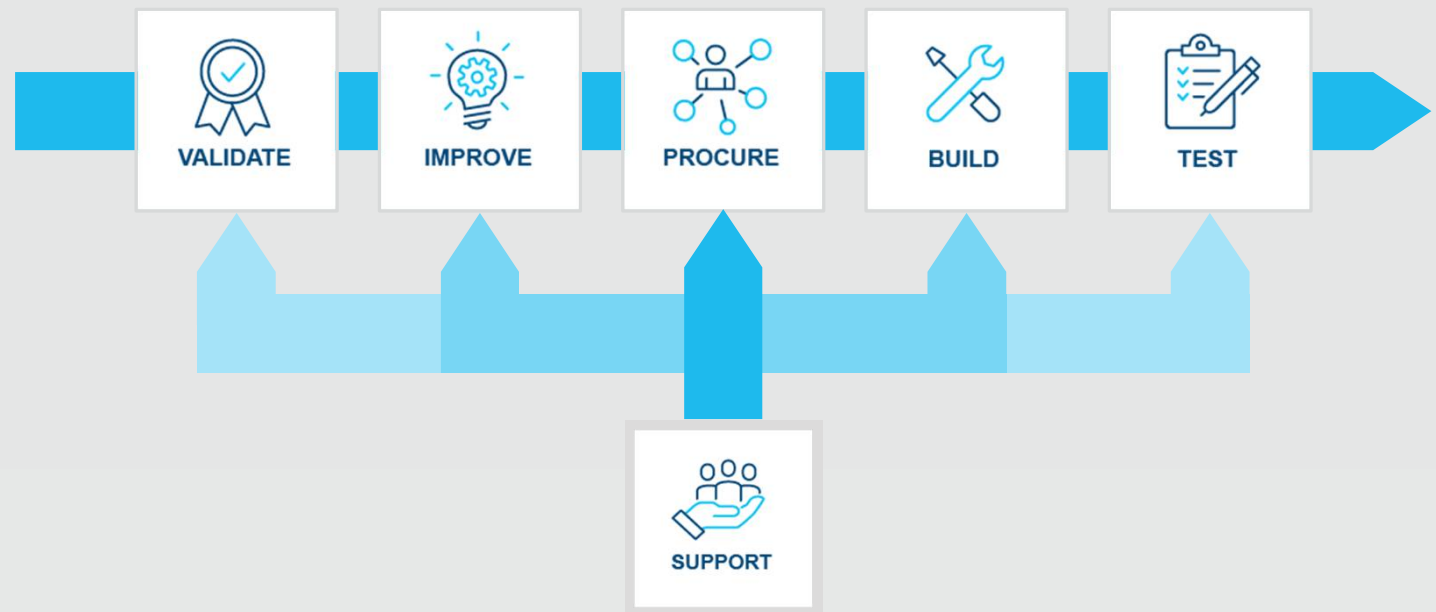


60

## Poynton, Cheshire

- Large systems build and product assembly (Astrium)
- Advanced systems manufacture & integration
- Specialist spares and repairs
- Full rack wiring and integration
- Complex wiring and electro-mechanical assembly
- Test facilities – RF testing, Anechoic chamber, EMC chamber and 6-degrees of freedom motion bed

# OUR VALUE PROPOSITION



# VALUE PROPOSITION DETAILS



## VALIDATE

- Review your data pack
- Analysis of your BOM
- Confirm how we buy and build your solutions to achieve your required outcome



## BUILD

- We utilise the latest automated technology
- Fully trained and competent staff aligned to essential industry standards
- Fully supported assembly builds (DFM)



## IMPROVE

- Apply industry knowledge to enhance your BOM and Data pack (DFx)
- Where we see an opportunity to make the product more robust or efficient we propose the best route to success



## TEST

- Leading edge test development capability (DFT)
- Apply test strategy best fitting the entire product lifecycle (PCBA to full system integration)



## PROCURE

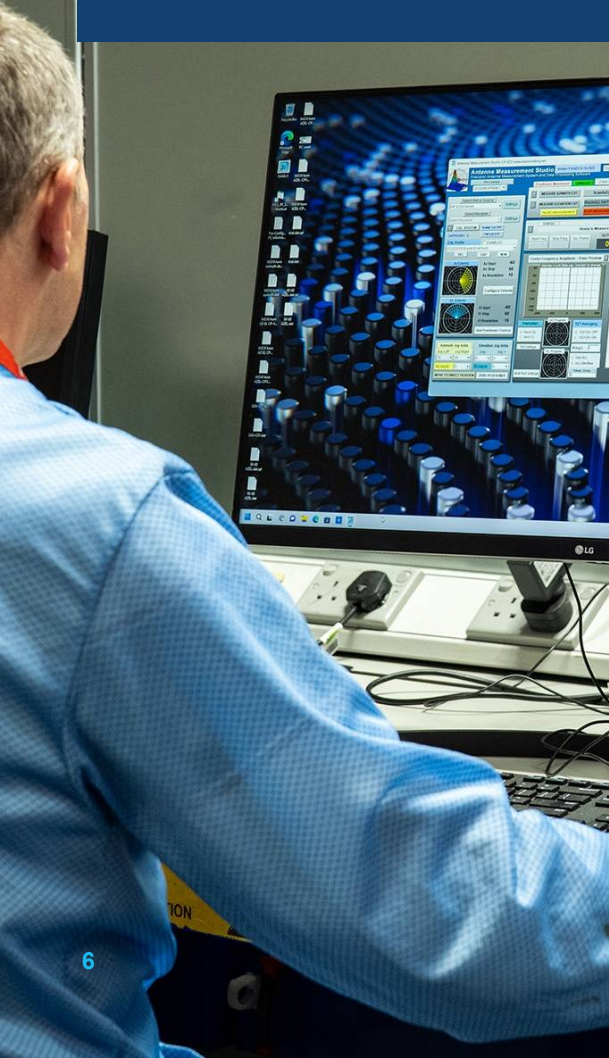
- De-risking supply with inventory managed solutions
- Offer the most competitive price and lead time to fit the programme requirements



## SUPPORT

- Robust obsolescence management
- Capture process variation & manage resolution through statistical tools
- Route cause analysis and reporting

# DESIGN SERVICE OPTIONS



STI can provide the following engineering services to optimise PCBA design:



## Design for Manufacture (DfM)

Ease of manufacture; yield



## Design for Test (DfT)

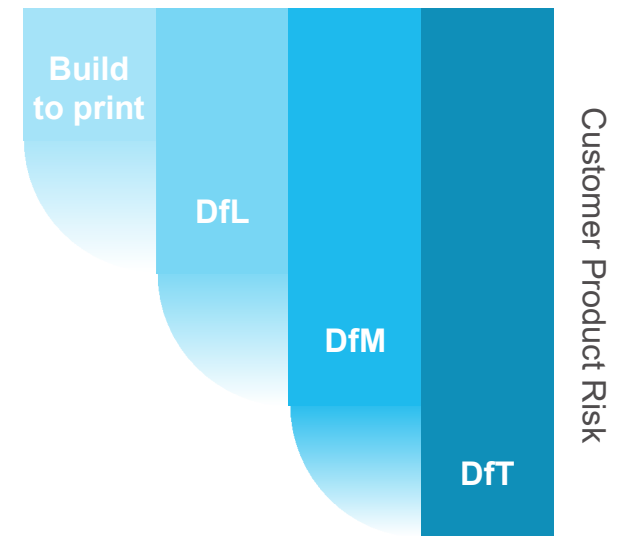
Testability & proving performance



## Design for Longevity (DfL)

Future proofing through obsolescence management

Degree of Engineering Services



# PCBA MANUFACTURE

## Data Validation & Digital Twin



Manufacture prep  
(BOM, CAD, DfM)

## Solder Paste Screenprint



Solder Paste  
Screenprint

Apply solder  
paste to the PCB

## Solder Paste Inspection (SPI)



Correct amount of solder  
in the right locations?

## Surface Mount Placement (SMT)



'Pick & place': Max 30,000  
comp/hr positioning  $\pm 35\mu\text{m}$

## Reflow Oven



Multiple gradient heating &  
colling zones

## Automatic Optical Inspection (AOI)



Missing or incorrectly  
placed parts?

## Board Cleaning



Remove any remaining  
residues

## OPTIONS

### Solder Jet Printing



Apply solder paste  
& bonding glue

### Selective Solder (through-hole)



Precise and accurate  
targeted soldering

### Wave Solder Oven



Molten solder wave for  
through-hole components

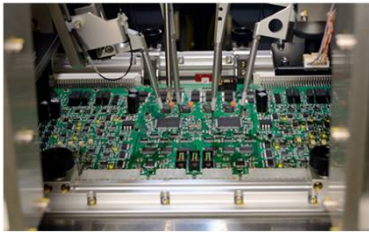
### X-Ray Analysis



Identify internal defects  
(solder voids, cracks)

# Test Capability

## Flying Probe



- Tests: Presence, polarity, value, short/open checks
- Checks all component types: Resistors, capacitors, ICs, diodes, LEDs, FETs, transistors, photocouplers, relays, inductors, transformers, connectors

## Boundary Scan



- JTAG functional testing
- Expansion of test coverage using loopbacks

## PXI Test



- Advanced test and measurement solution
- Combines hardware and software components
- Complex measurement and automation

## Environmental Stress Screening (ESS)



- -70°C to +200°C
- Unpowered or powered functional test ESS
- RF chamber up to 6GHz

## Test services:

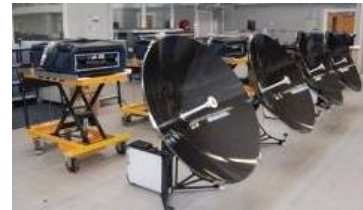
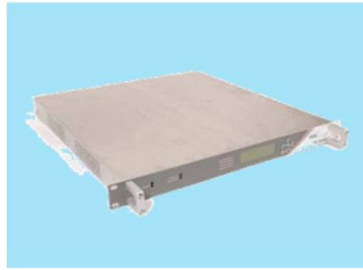
- Manufacturing defect analysis
- Device programming
- Backplane testing
- Functional test
- Boundary scan
- Design for test
- Custom scripting, application specific
- Test fixture design
- Test optimisation

# How STI delivers success for your program



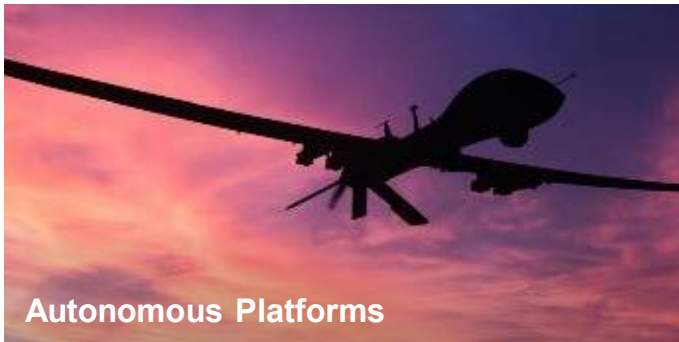
- Validates and confirms your precise required specification prior to manufacturing – focussed on “right 1<sup>st</sup> time” and 100% OTD.
- Enables your business to scale and grow where you don’t have the capacity, facilities, equipment’s or skills.
- Qualified and trusted with 40 years of heritage and all required standards and accreditations.
- Flexible to work at pace over compressed shifts to meet demanding schedules.
- Plans with you, and advises on how to de risk obsolescence in supply chain.

# PRODUCT AND SYSTEM BUILD EXAMPLES



# STI ENABLING END USER CAPABILITIES

Examples of where our embedded technology & skills enables capabilities throughout defence & security



Autonomous Platforms



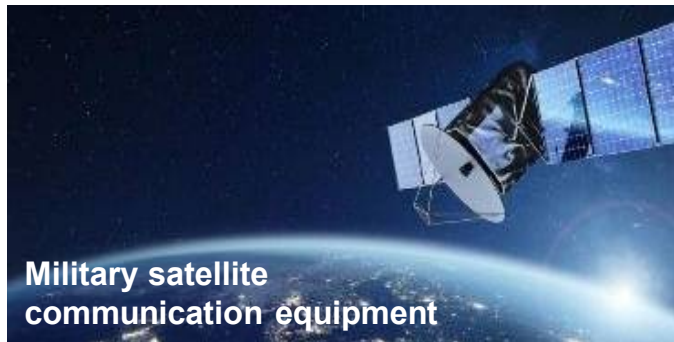
Secure Communication Systems



Lasers and guided weapons



Counter UAS



Military satellite communication equipment



Radar & Sensors



# CUSTOMER TESTIMONY

## Customer & Relationship Focus

- Improvements to Account Management  
*“Really value the new focus on close account management and speed of response”*  
**Procurement & Supply Chain Directors**
- Rapid analysis to resolve technical failure  
*“Over the moon with how you rapidly analysed the problem and quickly identified where to focus – well done all at STI”*  
**Head of Project Delivery**
- Support for urgent operational support  
*“Accepting that commercial negotiations need to conclude, your attitude and ownership of an operational criticality was fully recognised by MoD – kudos STI”*  
**IPT Delivery Manager**

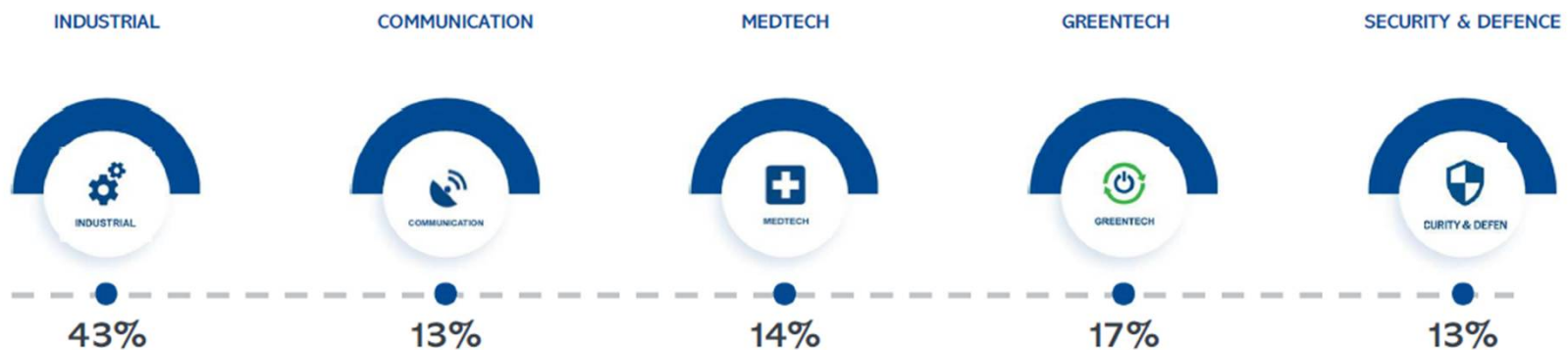
## Operational Excellence & Quality Focus

- Prevention of a quality issue  
*“Highly impressed as you identified a potential quality issue regarding build specification. Your focus was second-to-none as to how you spotted it, and furthermore the build was de risked and the plan was exemplary – your competitor wouldn't have done this.”*  
**Head of Engineering**

# NOTE Acquisition

## Who is NOTE?

- Electronic Manufacturing Services Partner serving Industrial, Greentech, Medtech, Defence & Security and Communications
- Founded in 1999
- Employs 1,475 people across multiple sites centred mainly in the UK and Europe
- 2025 turnover 3,814MSEK (£305M)
- Listed on the Nasdaq Stockholm exchange



# NOTE Locations

**NOTE's** headquarter is based in Stockholm and we have 12 production units in Europe and Asia.

**SWEDEN** – Torsby, Norrtälje, Lund, Herrljunga

**FINLAND** – Hyvinkää

**UK** – Windsor, Haddenham, Basildon, Wolverhampton

**ESTONIA** – Pärnu

**BULGARIA** – Sofia

**CHINA** – Tangxia



**NOTE**<sup>™</sup>  
YOUR MANUFACTURING PARTNER



# THANKYOU!



## **Neale Osmond**

Business Development Manager

[neale-osmond@sti-limited.com](mailto:neale-osmond@sti-limited.com)

+44 (0) 7768 096378

## **STI Hook**

Osbourne Way, Hook,  
Hampshire RG27 9HX

[www.sti-limited.com](http://www.sti-limited.com)



Connect with us

STI